

# THE MEWS

## Affordable Housing for Raritan Twsp 215 RT 12

[www.countrysideplaza.biz](http://www.countrysideplaza.biz)

Six rental Units of 2 low and 3  
moderate income Housing  
3 units leased to the ARC of  
Hunterdon

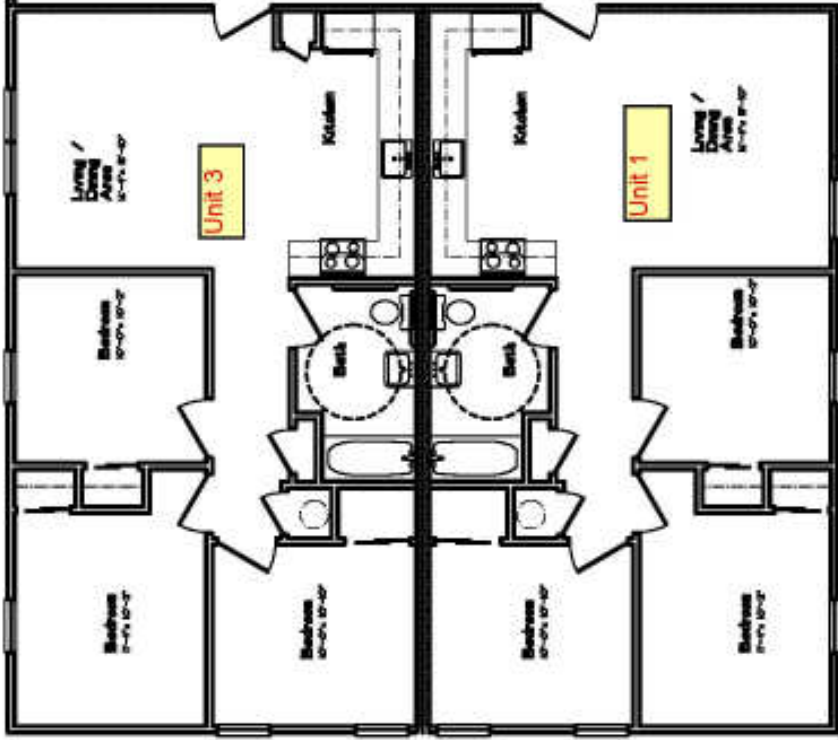


**Countryside Plaza Affordable Housing 79 rt 202/31 suite 101 Ringoes NJ 08551**

robwork@robinhill.com 908 782-1980

First floor

Unit 1C  
AREA: 874 sq/ft  
3 BEDROOM UNIT

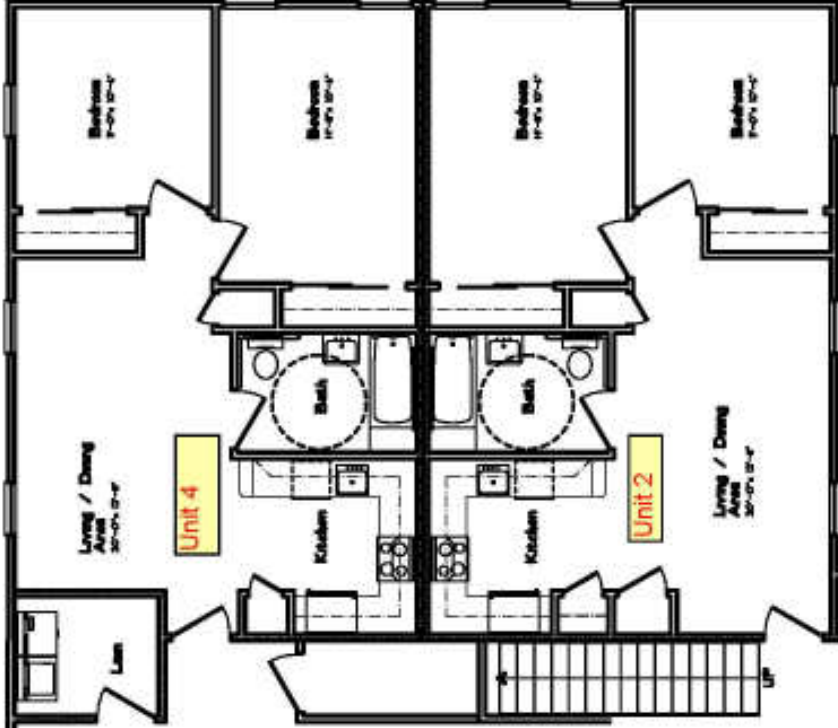


3 BEDROOM UNIT  
AREA: 874 sq/ft  
Unit 1A

Unit 1

future lift

Unit 1D  
AREA: 780 sq/ft  
2 BEDROOM UNIT

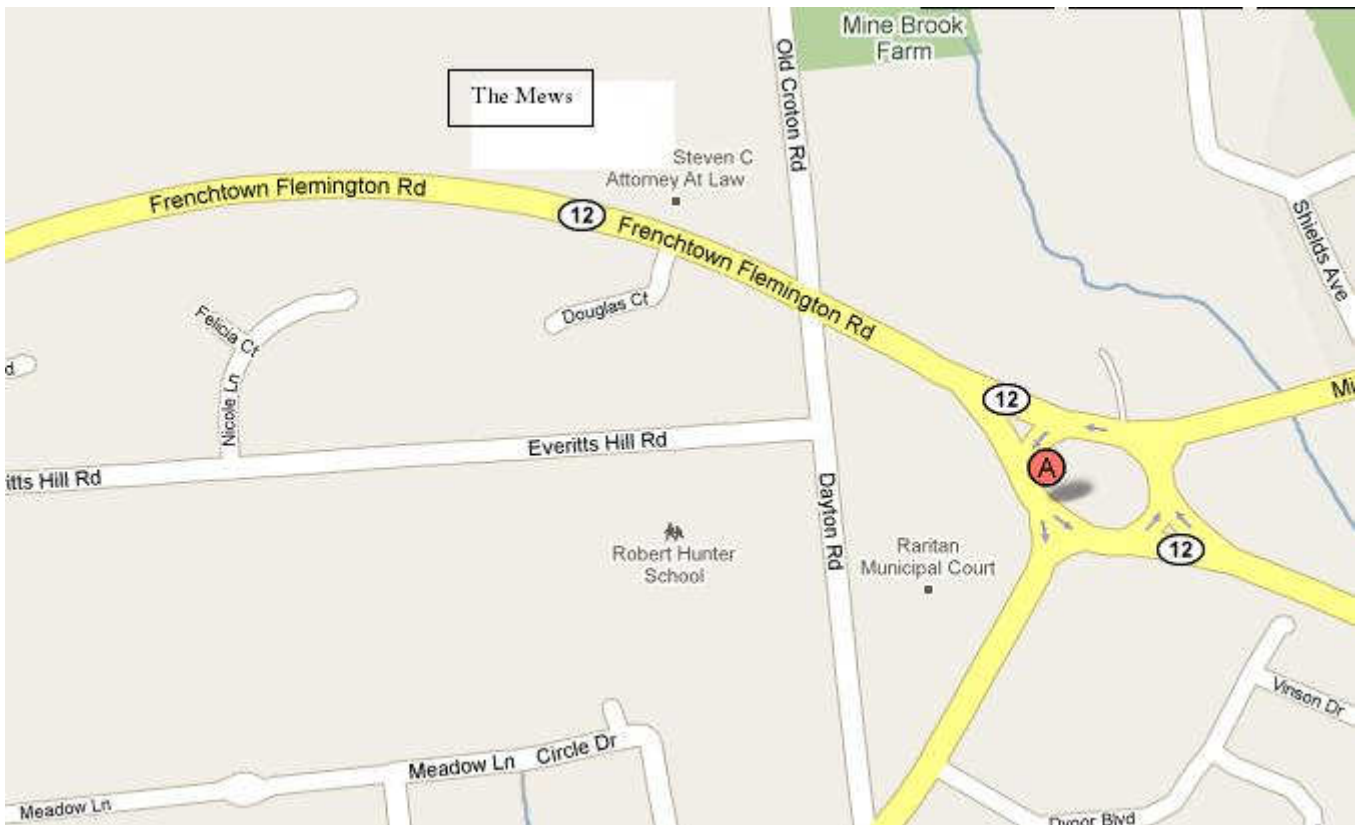


Unit 1B  
AREA: 780 sq/ft  
2 BEDROOM UNIT

Unit 2

Unit 4

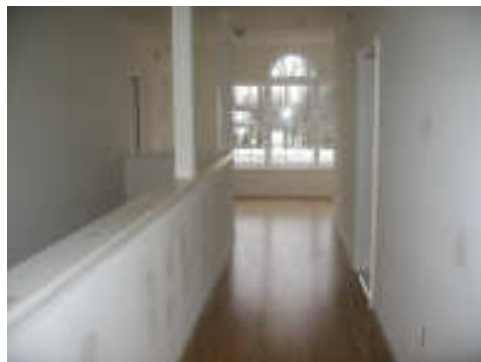




### Directions:

**From North ; 287 South :** Take exit 17 and merge onto us-206/206 south. : Keep left at the fork 13.2 miles to Flemington At traffic circle take 2nd exit to Rt 12 continue on Rt 12 for 2 more circles. Go thru light and The mews is on the right side appx 1000 ft from light

**From South:** Rt 31 north Merge into NJ33/US 202 . At Traf-  
fic Circle take 3rd exit to Rt 12 :Continue on Rt 12 thru 2  
more circles. Go thru light and The mews is on the right side  
appx 1000 ft from light



# Energy Efficiency

Our units are designed to keep your overhead low. Our walls are constructed with 2x6's, our windows are insulated glass, our furnaces are high efficiency, our site is served by natural gas as well as. Our commitment is to save our resources and keep your energy bill low. We also install sound proofing between all floors as well as ceiling with double layered sheet-rock.



## Family Owned and Built

Countryside Plaza has been built and maintained by the Mortara family. Under the direction of Robert and Ren Mortara the facilities are managed and built so the client will get personal service from the owners.

## **Amenities list**

Gas heat and central Air  
Electric stove  
Dishwasher– Refrigerator  
Outside picnic area  
2x6 wall energy efficient construction  
Insulated windows  
ADA adaptable  
Grab bars all Bath  
Sprinkler su=system  
Door answering system  
Separate utility metering  
Prewired phone-computer and TV  
Carpeting and linoleum flooring  
On site Laundry  
Storage closet in the units  
Ample lighted parking  
2 miles to Shopping k  
1 mile to buss stop  
Walking distance to park and public schools  
Sound proofing between units and Ceilings with double sheetrock  
Free Wifi  
Common area secured with door answering system

## **Restrictions**

Gas grills allowed in picnic area  
No pets  
No unregistered vehicles  
No Vehicle repairs on site

**INFORMATION ON AFFORDABLE RENTAL UNITS  
THE MEWS**

**5 - Affordable Apartments  
IN RARITAN TOWNSHIP**

Currently there are (5) rental units available, 2 units are **two bedroom moderate** income, 1 units are **three bedroom low** income and 2 units are **three bedroom moderate** income. These units are being rented under the NJ Low and Moderate Income Affordable Housing Program. Households must be a minimum of two persons for the two bedroom units, no **larger** than a four person household and for the three bedroom units, must be a minimum of two persons and no larger than a six person household. These units will be ready for occupancy on or about **December 1, 2010**. A random selection (lottery) will be held for all certified households who apply for and pass the landlord credit check. The lottery is expected to be held at SCCOAH'S office in Raritan, NJ on **November 15, 2010** at 12:05PM. Applicants are not required to attend.

The breakdown of bedroom size and rental rate for the affordable unit are as follows:

<b>Unit Size &amp; Category</b>	<b>Total Square Feet</b>	<b>Floor &amp; Bedroom Sizes</b>	<b>Rental Rate</b>	<b>Maximum Income Limit</b>
2 Bedroom Moderate	Apt. # 5 – 814	Both on Second Floor 164 & 130 Sq. Ft.	\$1,149.00	2 person - \$65,280.00 3 person - \$73,440.00 4 person - \$81,600.00
	Apt. # 6 - 750	153 & 117 sq. ft.		
3 Bedroom Low	Apt. # 8 - 875	Apt. #8 - Second Floor 120, 112, & 102 Sq. Ft.	\$999.00	2 person - \$40,800.00 3 person - \$45,900.00 4 person - \$51,000.00 5 person - \$55,080.00 6 person - \$59,160.00
3 Bedroom Moderate	Apt. # 1- 894	Apt. # 1 – First Floor 115, 108, & 102 Sq. Ft.	\$1,249.00	2 person - \$65,280.00 3 person - \$73,440.00 4 person - \$81,600.00 5 person - \$88,128.00 6 person - \$94,656.00
	Apt. # 7 - 894	Apt. # 7 -Second Floor 120, 112, & 105 Sq. Ft.		

**FEATURES**

Sprinkler System & Door Answering System	Ample parking, public transportation nearby
Electric Stove, Dishwasher, Refrigerator	No elevator, no patio or balcony, shared picnic area and gas grills are allowed in picnic area only
Carpeting and Linoleum Flooring, Grab Bars in all baths	No pets – No Maintenance Fees Landlord pays Water, Sewer & Garbage
Storage closet in the unit	First floor coin operated laundry on site
Gas Heat and Central Air Tenant Pays Utilities Separate Utility Metering	Hard wired smoke detector and battery operated carbon monoxide detector. Pre-wired phone, Computer and Cable TV

**Rental price based on the Affordable Housing guidelines and regulations.**

\*All fees are subject to changes and increases.

**REQUIREMENTS.**

- Your household must be income certified/qualified under the Council on Affordable Housing (COAH) income guidelines
- You will need to have a good credit history and pass the landlord's credit check guidelines.
- First months rent and one and one half month's security required

For applications and details of the process contact:

Somerset County Coalition on Affordable Housing (SCCOAH) (Hours Monday-Friday 9-5)

600 First Avenue, Suite 3, Raritan, NJ 08869 - 908-203-4560

Raritan township..factsheet.new.10.14.10